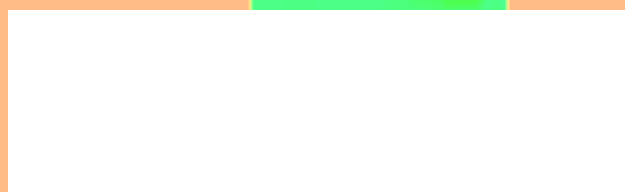
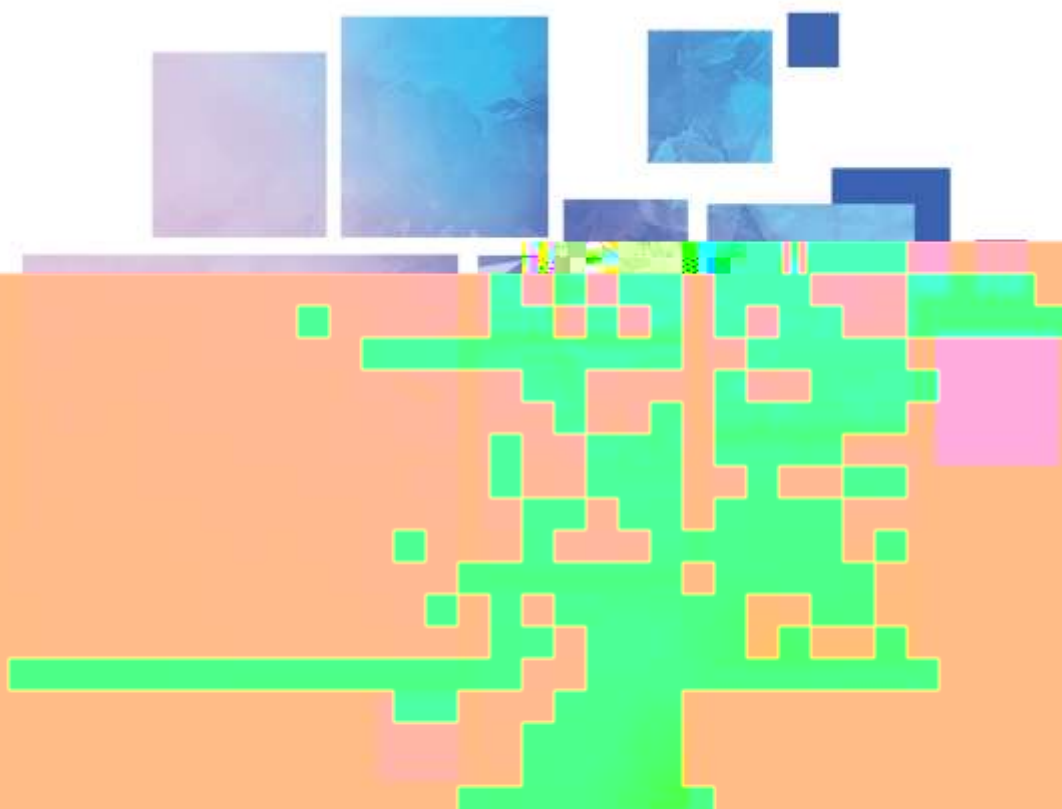


# THC-D6 KYSTAR



TEL 400 159 0808

Beijing KYSTAR Technology Co., Ltd.

Professional Ultra HD Video Display

Dedicated application expansion connection for LED support 3D support. This port helps synchronize signals between LED lights and 3D glasses host. Allows users to experience vivid three-dimensional images.

Built-in light sensor automatically adjusts the brightness of the LED screen according to environmental conditions, providing an optimal viewing experience and saving energy.

Device indicator light, green light, RUN, running status indicator light; red light, PWR, power status indicator light.

Integrated 4g sim card using network operator in Vietnam.

Full screen resolution processing capability processor meets > 20 million Pixels.

Remote update control device transmits information through cloud server with registered intellectual property certificate, information security and safety.

Connect at least 2 Monitor screens via HDMI 2.1, DP1.4 signal ports.

Schedule on/off according to preset schedule. Support operating systems (window, ios, android). Feature to set show time frame, On/Off timer.

AVI, WMV, MPG, RM/RMVB, VOB, MP4, FLV and other popular video formats

WiFi AP+STA dual WiFi mode, can be used as a hotspot for mobile phones and computers to connect

Support multiple video playback at the same time Single line text, static text, multi-line scrolling text, office, etc. Can run video, image, slide, excel, word, etc. document file formats Split multiple window frames, mix between video, image according to the desired layout.

Support 32-bit true color OSD, can display in any position, support video/graphics mixing, and can overlay video graphics.

Support 1080p@60fps hard decode playback, 1080p@30fps hardware encoding.

Easy to use, user-friendly interface. General hardware performance: Full screen resolution processing capability,

processor meets > 20 million pixels,

Motherboard: High-performance motherboard ,5th generation high-speed 32G RAM,512G high-speed solid-state drive,

expandable RJ45 transmission speed: 1000Mbps

Built-in Android 11.0 or Linux 4.9 (Buildroot/Debian10) operating system, clock speed up to 2.0GHz, delivering

outstanding performance and performance ratio. Mali-G52 GPU supports 4K 60fps H.265/H.264/VP9 video decoding

and 1080P 100fps H.265/H.264 video encoding.

Support multiple video input and output, rich interface and extensive peripheral expansion.Built-in 32G/64G EMMC

memory.Built-in stereo.

Support 4K (H264,H265, max. 4096 wide, 4096 high) and 8K (H265, Vp9, max. 8192 wide, 8192 high) signal connection

1.6GH memory, quad-core CPU, 3D GPU, 1GB@600MHz high-speed DDR5 RAM.

input voltage: 100-240V AC~50/60Hz 0.6A, general working temperature:

Input port		
Type	Quantity	Specification
DVI	4	DVI-D input, supports custom input resolution, up to 1920*1080@60HZ
HDMI2.0	3	Max support 3840*2160@60Hz 4K/60Hz
AUDIO-IN	1	Audio input interface

Output port		
Type	Quantity	Specification
LAN	32	Single port with maximum 650,000 pixels
HDMI2.0	4	HDMI2.0 loop-out HDMI input 4K/60Hz
3D-SYNC	2	3D sync signal output
USB	2	USB serial port, communicate with host software, control sending card, Connect multiple devices in series for cascade control

Control port		
Type	Quantity	Specification
UART	4	Automatic brightness control input serial port

RS232	2	Connecting DTE and DCE Data Transmission Equipment
RJ45	2	network data transmission
Wifi 5g	1	data transmission over wifi
LAN	1	optional support
USB-in & out	2	USB serial port, communicate with 252.201 3.42 efmmunicate with 252.25610 g(U